

2 **PMC** 8

AMMUNITION

HUNTING • COMPETITION • LAW ENFORCEMENT PRODUCTS



CREATING A LEGEND... ONE SHOOTER AT A TIME

TABLE OF CONTENTS

Gold Line - Starfire	Pgs. 4 - 5
Silver Line - eRange	Pgs. 6 - 7
Bronze Line - Handgun	Pgs. 8 - 9
Bronze Line - Rifle	Pgs. 10 - 11

In 2008 PMC will continue to focus on its most popular items in pistol and revolver ammunition, concentrating on its core markets of target, plinking, home defense and law enforcement.

This year we have improved the .223A. Our new ball powder virtually eliminates muzzle flash and greatly increases accuracy. This is an example of how Poongsan's extensive military research and development translates into a better product for civilian shooters.

We are looking forward to an even better year than last, and invite comments and suggestions for making our service and product the best in the world.

The Gold Line, featuring the incredibly popular Starfire ammunition designed for law enforcement and home protection.

The Bronze Line, our popular line of high quality, affordable ammunition for handgun and rifle.



POONGSAN

Poongsan operates large, exclusive ammunition production lines in their Angang and Dongrae plants in South Korea. In these facilities, the Company develops and supplies all types of ammunition used in today's military, from 5.56mm ammunition to 155mm projectiles for howitzers. Poongsan's munitions are highly competitive in product quality, price and delivery thanks to the Company's fully integrated production system which encompasses all production steps, from raw materials and parts to finished goods.

Poongsan also operates an independent quality management body separate from the production division. It has a complete quality control system for each processing step and lot, with strict inspections carried out by a government inspection team.

Poongsan is dedicated to preserving its leadership in high-tech precision ammunition markets through continuous research and development that meets the new precision-oriented needs demanded in modern situations.

Poongsan is proud of its active part in the war against terrorism and is committed to do whatever is necessary in the pursuit of world peace.

PMC Ammunition

In addition to its military munitions, Poongsan produces commercial ammunition for hunting and competition shooting under the brand name "PMC" (precision-made cartridges). PMC has reclaimed its solid reputation for excellent quality in the global market. To meet the growing demand for sporting ammunition, the Company has developed and exported over 100 various types of sporting ammunition, including the PMC lines of Starfire pistol and Bronze Line of handgun and rifle cartridges.

Poongsan looks toward the future with eRange, a line of environmentally friendly ammunition for indoor shooting ranges.

Taking pride in the large number of types and zero-defect performance of its ammunition, Poongsan uses carefully selected high-quality raw materials and ensures the high performance of sporting ammunitions by carrying out stringent quality inspections and target tests, the same inspections and tests as those for military ammunition.

NEW FOR 2008!
An improved PMC 223A
See Page 11 for more.

The Silver Line, eRange our non-toxic, fully encapsulated, environmentally friendly ammunition for indoor shooting ranges.



Rick Shoupe
Sales Director - North America

Last year PMC Ammunition joined forces with Poongsan Corporation to expand its markets in the Global ammunition arena. The intention, "To Be the Best in the World."

Customer response has far exceeded our expectations.

PMC GOLD LINE – STARFIRE

For well over a decade, Starfire high performance cartridges have been chosen by thousands of consumers as their chief means of home and personal defense. The Starfire bullet, brainchild of Tom Burczynski – the “dean” of high performance handgun bullet designers – was a frontrunner in the new era of advanced bullet design, and it’s still going strong today. The key to the broad, extremely reliable expansion inherent in each Starfire caliber, is the patented rib and flute design inside the deep hollow point cavity, hyper-expanding the bullet to nearly twice its original diameter and allowing it to deliver tremendous stopping power on target. Starfire’s optimal average penetration of 9” to 14” means that the bullet’s energy is expended in the target, rather than wasted on the landscape behind the target.



Starfire bullet integrity is excellent in weight retention.



While the bullet design of all Starfire cartridges facilitates smooth and reliable feeding in semi-automatic handguns, the bullet ogive and propellant impulse of the 9mm Starfire have been specifically engineered to provide trouble-free, completely reliable feeding in fully automatic weapons. This enables the use of high performance hollow point cartridges that feed just as dependably as ball ammunition when the full auto setting is necessary.

PISTOL HUNTING WITH STARFIRE

PMC Starfire’s awesome stopping power as law enforcement and home protection ammunition makes it an ideal round for pistol hunting applications.

If you are going to all the trouble of getting within pistol range of a big buck, wild boar or other game, you want a reliable ammo that will get the job done accurately, decisively and conclusively. That ammo is Starfire.



CALIBER	ITEM NO.	BULLET TYPE	WEIGHT (Grains)	ENERGY (ft. lbs.)	MUZZLE	VELOCITY (feet/second)				BULLET PATH (inches)			
						25 Yds	50 Yds	75 Yds	100 Yds	25 Yds	50 Yds	75 Yds	100 Yds
GOLD LINE PREMIUM PISTOL & REVOLVER STARFIRE AMMUNITION													
380 Auto*	380SFA	SFHP	95	180	925	884	847	813	783	+1.14	0.00	-4.12	-11.49
38 Special +P*	38SFA	SFHP	125	251	950	918	889	863	838	+1.06	0.00	-3.77	-10.45
357 Magnum*	357SFA	SFHP	150	480	1200	1131	1076	1031	992	+0.60	0.00	-2.47	-6.97
9mm Luger*	9SFB	SFHP	124	327	1090	1043	1003	969	939	+0.75	0.00	-2.89	-8.03
40 S&W*	40SFA	SFHP	180	388	985	958	933	910	889	+0.93	0.00	-3.45	-9.58
44 Rem Mag*	44SFA	SFHP	240	900	1300	1212	1138	1079	1030	+0.49	0.00	-2.13	-6.08
45 Auto*	45SFA	SFHP	230	369	850	830	811	792	775	+1.32	0.00	-4.63	-12.67

This ballistics table was calculated by using current data for each load. Velocity figures are from test barrels; user velocities may vary from loads listed. The data in the table represents the approximate behavior of each loading under the following conditions: 59°F, barometric pressure of 29.52 inches, sea level altitude.



PMC SILVER LINE - eRANGE™

PMC's eRange™ is an environmentally friendly ammunition utilizing a reduced hazard primer, an encapsulated metal jacket (EMJ) bullet which completely encloses the surface of the bullet core with a precision made copper alloy, and clean burning powder for smooth fire and increased barrel life.

These combined technologies eliminate the addition of airborne lead and heavy metals in shooting ranges while reducing burn residues in the firearms and brass cases.

CALIBER	ITEM NO.	BULLET TYPE	WEIGHT (Grains)	ENERGY (ft. lbs.)	VELOCITY (feet/second)				BULLET PATH (inches)				
					MUZZLE	25 Yds	50 Yds	75 Yds	100 Yds	25 Yds	50 Yds	75 Yds	100 Yds
BRONZE LINE PISTOL & REVOLVER AMMUNITION													
380Auto	380EMA	EMJ NT	90	169	920	886	853	822	791	+1.13	0.00	-4.12	-11.46
38 Special+P	38EMD	EMJ NT	125	250	950	920	892	864	837	+1.03	0.00	-3.77	-10.44
38 Special	38EMG	EMJ NT	132	207	840	817	795	773	752	+1.38	0.00	-4.82	-13.27
38 Special	38EMM	EMJ NT	158	225	800	780	760	741	722	+1.54	0.00	-5.29	-14.55
9mm Luger	9EMA	EMJ NT	115	338	1150	1099	1057	1020	988	+0.65	0.00	-2.59	-7.26
9mm Luger	9EMG	EMJ NT	124	339	1110	1059	1017	980	949	+0.71	0.00	-2.83	-7.86
357 Magnum	357EMA	EMJ NT	158	505	1200	1132	1078	1033	994	+0.60	0.00	-2.46	-6.95
40 S&W	40EMD	EMJ NT	165	355	985	955	928	903	879	+0.94	0.00	-3.46	-9.59
44 Remington	44EMD	EMJ NT	240	900	1300	1216	1144	1086	1038	+0.49	0.00	-2.11	-6.00
45 Auto	45EMA	EMJ NT	230	352	830	809	789	769	749	+1.41	0.00	-4.90	-13.48

This ballistics table was calculated by using current data for each load. Velocity figures are from test barrels; user velocities may vary from loads listed. The data in the table represents the approximate behavior of each loading under the following conditions: 59°F, barometric pressure of 29.52 inches, sea level altitude.

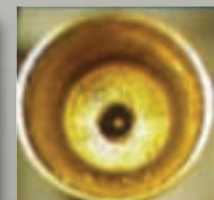


Totally encapsulated metal jackets (EMJ)



Standard Primer

PMC eRange Primer



PMC's eRange™ is particularly suited for shooters who have constructed personal indoor practice ranges in their basements. Public indoor shooting ranges have elaborate air filtration systems, basements don't. PMC's eRange™ allows you to practice in these confined spaces without the fear of contamination from airborne lead and heavy metals.



Bronze Line



PMC BRONZE LINE - HANDGUN

The same quality and dependability built into our Starfire ammunition is incorporated throughout our extensive PMC Bronze Line. A complete lineup of FMJ, HP and SP. All PMC cartridges, must pass through the rigorous inspection of our electronic powder check station. This station accurately measures the propellant charge in each round. If the propellant in any cartridge varies by a tiny amount – just two tenths of one grain – the system stops and that cartridge is discarded. No other ammunition manufacturer can truthfully assure you greater uniformity and reliability than PMC!



FULL METAL JACKET (FMJ)

Lead core is enclosed by a strong metal jacket on this non-expanding, deep penetrating bullet. Provides smooth, reliable feeding in all types of semi-auto handguns.



JACKETED SOFT POINT (JSP)

Exposed lead soft point initiates reliable expansion, provides deeper penetration than hollow point bullets. Precisely engineered copper jacket and swaged lead core provide the necessary concentricity and balance required for top-level accuracy.



JACKETED HOLLOW POINT (JHP)

The exposed lead at the tip of the PMC jacketed hollow point rapidly initiates uniform, controlled expansion that progresses to the depth of the hollow point cavity. Penetration is also controlled for maximum energy transfer to the target, assuring its suitability as a hunting bullet. Excellent accuracy and bullet integrity.



FULL METAL JACKET FLAT POINT (FMJ-FP)

Non-expanding and deep penetrating, this general purpose bullet is a good choice for target use because of its accuracy. Its lead core is enclosed by a metal jacket, which eliminates barrel leading. Provides smooth, reliable feeding in semi-automatic handguns.



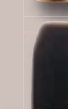
TRUNCATED SOFT POINT (TC-SP)

An excellent choice for hunting and general shooting, the soft point of this bullet initiates uniform, controlled expansion. Characterized by very reliable functioning in semi-auto and excellent accuracy.



FULL METAL JACKET TRUNCATED CONE (FMJ-TC)

The truncated cone shape of this bullet makes feeding smooth and reliable in semi-autos, cannot lead barrels because its lead core is enclosed by a heavy metal jacket.



CALIBER	ITEM NO.	BULLET TYPE	WEIGHT (Grains)	ENERGY (ft. lbs.)	VELOCITY (feet/second)				BULLET PATH (inches)				
					MUZZLE	25 Yds	50 Yds	75 Yds	100 Yds	25 Yds	50 Yds	75 Yds	100 Yds
BRONZE LINE PISTOL & REVOLVER AMMUNITION													
25 Auto	25A	FMJ	50	62	750	722	695	670	645	+1.83	0.00	-6.33	-17.50
32 Auto	32A	FMJ	71	126	900	869	838	809	781	+1.19	0.00	-4.28	-11.89
32 Auto	32B	JHP	60	117	980	849	820	791	763	+1.26	0.00	-4.49	-12.46
380 Auto	380A	FMJ	90	169	920	886	853	822	791	+1.13	0.00	-4.12	-11.46
38 Special	38G	FMJ	132	207	840	817	795	773	752	+1.38	0.00	-4.82	-13.27
38 Super +P	38SA	FMJ	130	343	1090	1041	1000	965	934	+0.75	0.00	-2.92	-8.16
9mm Luger	9A	FMJ	115	338	1150	1099	1057	1020	988	+0.65	0.00	-2.59	-7.26
9mm Luger	9B	JHP	115	344	1160	1099	1049	1007	971	+0.65	0.00	-2.62	-7.37
9mm Luger	9G	FMJ	124	339	1110	1059	1017	980	949	+0.71	0.00	-2.83	-7.86
357 Magnum	357A	JSP	158	505	1200	1132	1078	1033	994	+0.60	0.00	-2.46	-6.95
357 Magnum	357B	JHP	125	584	1450	1337	1235	1155	1093	+0.36	0.00	-1.78	-5.19
10mm Auto	10A	FMJ-TC	200	490	1050	1008	972	941	912	+0.82	0.00	-3.08	-8.63
10mm Auto	10B	JHP	170	543	1200	1117	1052	1000	958	+0.62	0.00	-2.55	-7.21
40 S&W	40B	JHP	165	396	1040	1002	970	941	915	+0.83	0.00	-3.14	-8.75
40 S&W	40D	FMJ	165	355	985	955	928	903	879	+0.94	0.00	-3.46	-9.59
40 S&W	40E	FMJ-FP	180	388	985	957	931	908	885	+0.94	0.00	-3.44	-9.52
44 S&W Special	44SB	JHP	180	383	980	938	902	869	839	+1.00	0.00	-3.67	-10.14
44 Rem Mag	44B	JHP	180	783	1400	1270	1167	1091	1032	+0.42	0.00	-2.01	-5.84
44 Rem Mag	44D	TCSP	240	900	1300	1216	1144	1086	1038	+0.49	0.00	-2.11	-6.00
45 Auto	45A	FMJ	230	352	830	809	789	769	749	+1.41	0.00	-4.90	-13.48
45 Auto	45B	JHP	185	333	900	867	836	805	776	+1.19	0.00	-4.30	-11.96

This ballistics table was calculated by using current data for each load. Velocity figures are from test barrels; user velocities may vary from loads listed. The data in the table represents the approximate behavior of each loading under the following conditions: 59°F, barometric pressure of 29.52 inches, sea level altitude.

Bronze Line



PMC BRONZE LINE - RIFLE

For shooters and hunters who appreciate affordable quality ammunition, the PMC Bronze Line offers reliable performance for every shooting application, from target shooting to hunting. This long-popular ammunition line makes it possible for hunters and riflemen to enjoy high volume shooting without emptying their wallets. Bronze ammunition is available in Full Metal Jacket (FMJ) bullet types in .223A Remington, .308B Winchester, 30 Carbine, 7.62 x 39 and .50A in commercial and military packaging.



FULL METAL JACKET BULLET (FMJ)

The lead core of this bullet is enclosed in a heavy copper jacket, which results in little or no expansion and deep penetration. Not recommended for hunting, the primary use of the FMJ is target shooting.

FULL METAL JACKET BOAT TAIL BULLET (FMJ-BT)

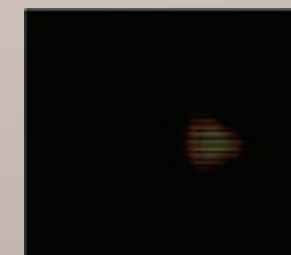
Designed primarily for target shooting applications, this bullet offers excellent ballistic performance and superior down-range accuracy due to its rear-taper, boat tail construction. Its solid lead core is fully enclosed by a full metal jacket.

NEW AND IMPROVED PMC 223A!

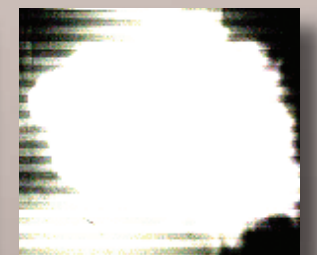
PMC Ammunition/Poongsan is dedicated to providing the marketplace with the finest product available. To that end, we are introducing the new PMC 223A. By utilizing a new ball powder, called PMC 2222, we have greatly improved shot-to-shot deviation resulting in greater accuracy.

Another benefit of this new powder is a profound reduction of muzzle flash which is critical in military and law enforcement applications.

MUZZLE FLASH



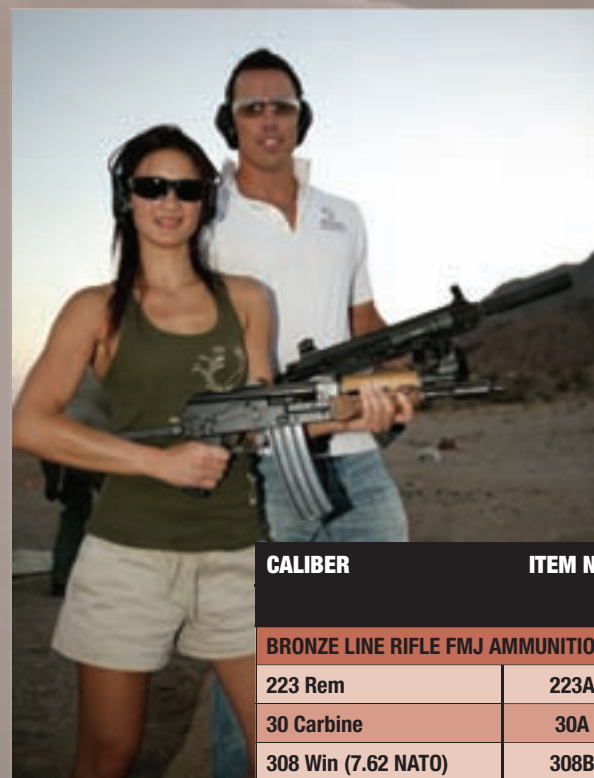
New PMC 223A Muzzle Flash



Standard .233 Muzzle Flash

ACCURACY

PMC 223A - FMJ-BT
PMC's new ball powder has allowed greater accuracy and greatly reduced muzzle flash. The 223A is available in commercial or military packaging.



CALIBER	ITEM NO.	BULLET TYPE	WEIGHT (Grains)	VELOCITY (feet/second)						ENERGY (foot/pounds)						BULLET PATH (inches)						
				MUZZLE	100 Yds	200 Yds	300 Yds	400 Yds	500 Yds	MUZZLE	100 Yds	200 Yds	300 Yds	400 Yds	500 Yds	MUZZLE	100 Yds	200 Yds	300 Yds	400 Yds	500 Yds	
BRONZE LINE RIFLE FMJ AMMUNITION																						
223 Rem	223A	FMJ-BT	55	3200	2833	2493	2180	1893	1635	1250	980	759	580	438	326	-1.05	+1.43	0.00	-7.06	-21.48	-45.47	
30 Carbine	30A	FMJ	110	1930	1485	1141	-	-	-	910	524	318	-	-	-	-0.50	-2.59	-21.28	-	-	-	
308 Win (7.62 NATO)	308B	FMJ-BT	147	2780	2575	2380	2194	2018	1851	2522	2164	1848	1571	1329	1118	-1.50	+1.88	0.00	-8.03	-23.29	-47.11	
7.62 x 39	7.62A	FMJ	123	2350	2072	1817	1583	1368	1171	1495	1162	894	678	507	371	+0.60	0.00	0.50	-26.40	-67.80	-135.00	
50 Caliber	50A	FMJ-BT	660	3080	2854	2639	2444	2248	2061	13688	11753	10049	8619	7292	6129	+1.50	+3.10	+3.90	+4.70	+2.80	0	

This ballistics table was calculated by using current data for each load. Velocity figures are from test barrels; user velocities may vary from loads listed. The data in the table represents the approximate behavior of each loading under the following conditions: 59°F, barometric pressure of 29.52 inches, sea level altitude.



Poongsan Corporation - Keuk Dong Bldg, 60-1 Chungmuro-3ka, Chung-Ku, Seoul, Korea 100-705

Phone: +82 2 3406 5628 • Fax: +82 2 3406 5415 • www.poongsan.co.kr

PMC/Ammunition U.S. Sales Office - P.O. Box 940878, Houston, TX 77094-7878

Phone: 281-759-9020 • Fax: 281-759-0784